

A climate emergency

AUCKLAND ▾
NOW 13° TODAY 15° | 10°



NEWS SPORT WEATHER

HOME LATEST NEW ZEALAND WORLD ENTERTAINMENT POLITICS

NEW ZEALAND

Hawke's Bay Regional Council declares a climate emergency

26 Jun, 2019 9:01am

3 minutes to read

Ardern backs declaring climate change emergency in Parliament



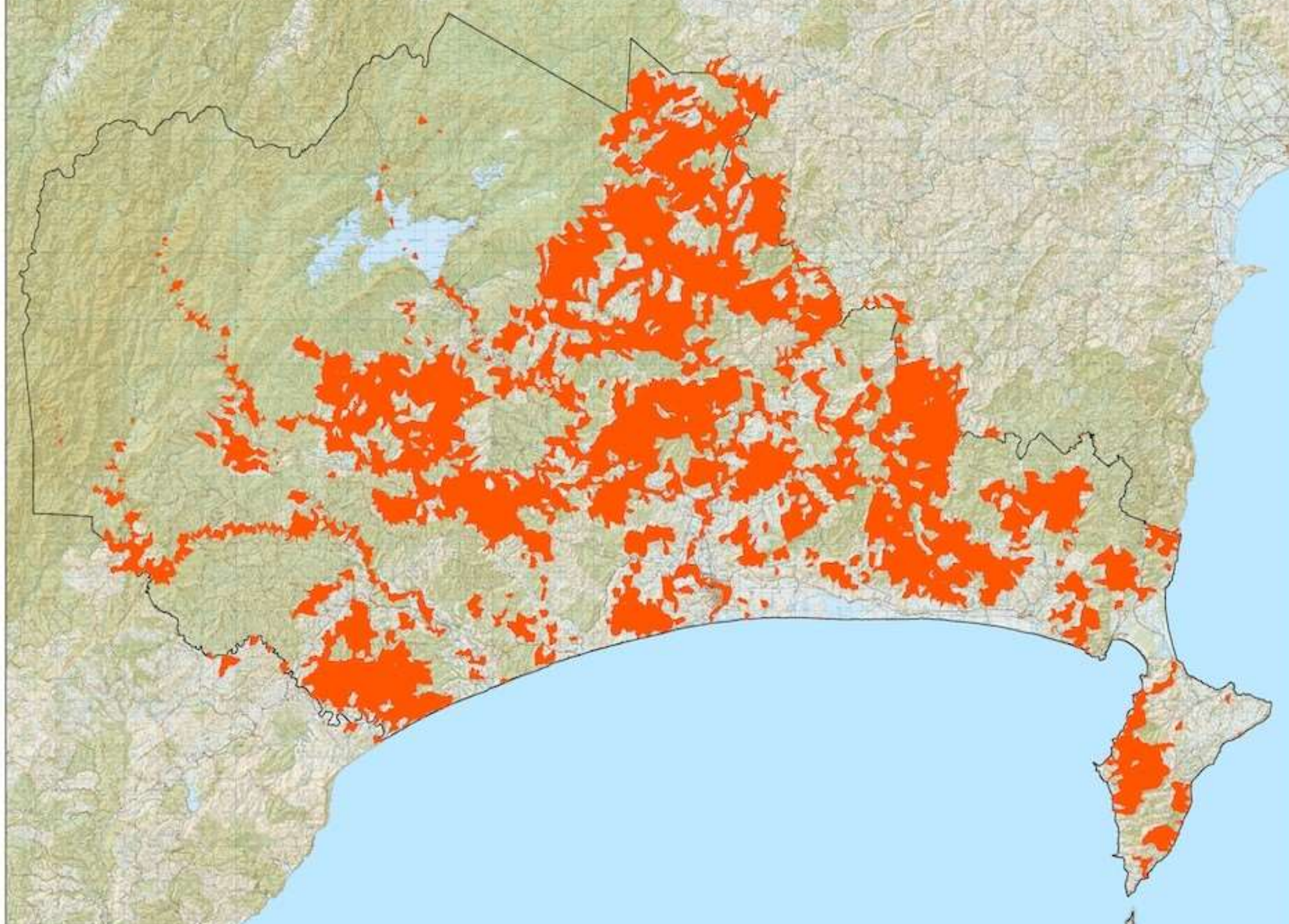
Source: rnz.co.nz




People protest outside last week's committee meeting, but few came to watch the decision at council. Photo / Peter Tang

Hawkes Bay Today





Key

 Sednet > 1000t/km2/yr



Scale: 1:350,000



DATA FROM: Information obtained from the Hawke's Bay Regional Council's Geographic Information Systems Database.

LIMITATIONS AND COPYRIGHT
This map may not be reproduced or transmitted in any other

www.abovehawkesbay.co.nz



“Erosion is the norm here, it grasses over quickly!”

“Don’t deny there is an erosion issue but it has been way overstated!”

“Show me where all the red is on my farm?”

“I am not against planting trees!”

“How much do I have to reduce erosion on my farm by?”

“Where has the sediment all gone then?”

“I can only logistically do what I can each year, with... goats, weeds, fencing, R&M, finances, ability to appropriately manage the area and maintain it”

www.abovehawkesbay.co.nz



www.abovehawkesbay.co.nz

